



VUA Series

Features

- 6.3 ϕ ~ 18 ϕ , 125°C, 1,000 ~ 2,000 hours assured
- Chip type high temperature range, for +125°C use
- For automobile modules and other high temperature applications
- RoHS Compliance

NSCN | WWW.NSCN.COM.CN

总机: 025-52188228 客服: 400-888-5058
 技术: 025-84712971 邮箱: TECH@NSCN.COM.CN
 南京南山半导体有限公司



Marking color: Black

Specifications

Items	Performance																				
Category Temperature Range	-40°C ~ +125°C																				
Capacitance Tolerance	±20% (at 120Hz, 20°C)																				
Leakage Current (at 20°C)	I = 0.03CV or 4 (μA) whichever is greater (after 1 minutes) Where, C = rated capacitance in μF V = rated DC working voltage in V																				
Dissipation Factor (Tanδ at 120Hz, 20°C)	<table border="1"> <tr> <th>Rated Voltage</th> <td>10</td> <td>16</td> <td>25</td> <td>35</td> <td>50</td> </tr> <tr> <th>Tanδ (max)</th> <td>0.32</td> <td>0.24</td> <td>0.21</td> <td>0.18</td> <td>0.15</td> </tr> </table> <p>When the capacitance exceeds 1,000μF, 0.02 shall be added every 1,000μF increase.</p>	Rated Voltage	10	16	25	35	50	Tanδ (max)	0.32	0.24	0.21	0.18	0.15								
Rated Voltage	10	16	25	35	50																
Tanδ (max)	0.32	0.24	0.21	0.18	0.15																
Low Temperature Characteristics (at 120Hz)	<p>Impedance ratio shall not exceed the values given in the table below.</p> <table border="1"> <tr> <th>Rated Voltage</th> <td>10</td> <td>16</td> <td>25</td> <td>35</td> <td>50</td> </tr> <tr> <th>Impedance</th> <td>Z(-25°C)/Z(+20°C)</td> <td>6</td> <td>5</td> <td>4</td> <td>3</td> <td>3</td> </tr> <tr> <th>Ratio</th> <td>Z(-40°C)/Z(+20°C)</td> <td>12</td> <td>8</td> <td>6</td> <td>4</td> <td>4</td> </tr> </table>	Rated Voltage	10	16	25	35	50	Impedance	Z(-25°C)/Z(+20°C)	6	5	4	3	3	Ratio	Z(-40°C)/Z(+20°C)	12	8	6	4	4
Rated Voltage	10	16	25	35	50																
Impedance	Z(-25°C)/Z(+20°C)	6	5	4	3	3															
Ratio	Z(-40°C)/Z(+20°C)	12	8	6	4	4															
Endurance	<table border="1"> <tr> <th>Test Time</th> <td>1,000 Hrs for $\phi D \leq 8 \times 6.5\text{mm}$ 2,000 Hrs for $\phi D \geq 8 \times 10\text{mm}$</td> </tr> <tr> <th>Capacitance Change</th> <td>Within ±30% of initial value</td> </tr> <tr> <th>Dissipation Factor</th> <td>Less than 300% of specified value</td> </tr> <tr> <th>Leakage Current</th> <td>Within specified value</td> </tr> </table> <p>* The above Specifications shall be satisfied when the capacitors are restored to 20°C after the rated voltage applied for 1,000 / 2,000 hours at 125°C.</p>	Test Time	1,000 Hrs for $\phi D \leq 8 \times 6.5\text{mm}$ 2,000 Hrs for $\phi D \geq 8 \times 10\text{mm}$	Capacitance Change	Within ±30% of initial value	Dissipation Factor	Less than 300% of specified value	Leakage Current	Within specified value												
Test Time	1,000 Hrs for $\phi D \leq 8 \times 6.5\text{mm}$ 2,000 Hrs for $\phi D \geq 8 \times 10\text{mm}$																				
Capacitance Change	Within ±30% of initial value																				
Dissipation Factor	Less than 300% of specified value																				
Leakage Current	Within specified value																				
Shelf Life Test	<table border="1"> <tr> <th>Test Time</th> <td>1,000 Hrs</td> </tr> <tr> <th>Capacitance Change</th> <td>Within ±30% of initial value</td> </tr> <tr> <th>Dissipation Factor</th> <td>Less than 300% of specified value</td> </tr> <tr> <th>Leakage Current</th> <td>Within specified value</td> </tr> </table> <p>* The above Specifications shall be satisfied when the capacitors are restored to 20°C after exposing them for 1,000 hours at 125°C without voltage applied.</p>	Test Time	1,000 Hrs	Capacitance Change	Within ±30% of initial value	Dissipation Factor	Less than 300% of specified value	Leakage Current	Within specified value												
Test Time	1,000 Hrs																				
Capacitance Change	Within ±30% of initial value																				
Dissipation Factor	Less than 300% of specified value																				
Leakage Current	Within specified value																				
Ripple Current & Frequency Multipliers	<table border="1"> <tr> <th>Freq.(Hz)</th> <td>50</td> <td>120</td> <td>1k</td> <td>10k up</td> </tr> <tr> <th>Cap.(μF)</th> <td>Under 330</td> <td>0.80</td> <td>1.0</td> <td>1.25</td> <td>1.40</td> </tr> <tr> <th>330 < C ≤ 4,700</th> <td>0.85</td> <td>1.0</td> <td>1.20</td> <td>1.30</td> </tr> </table>	Freq.(Hz)	50	120	1k	10k up	Cap.(μF)	Under 330	0.80	1.0	1.25	1.40	330 < C ≤ 4,700	0.85	1.0	1.20	1.30				
Freq.(Hz)	50	120	1k	10k up																	
Cap.(μF)	Under 330	0.80	1.0	1.25	1.40																
330 < C ≤ 4,700	0.85	1.0	1.20	1.30																	

Diagram of Dimensions

Fig. 1

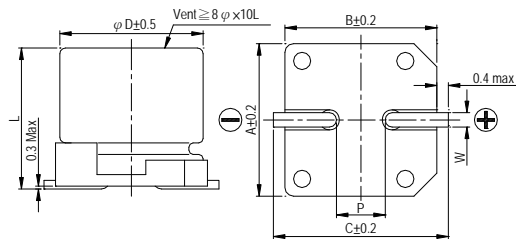
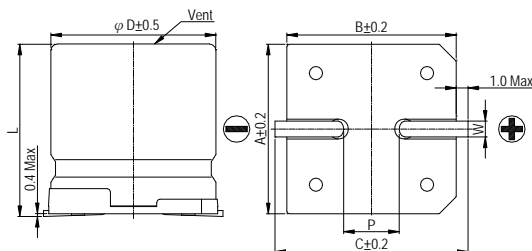


Fig. 2



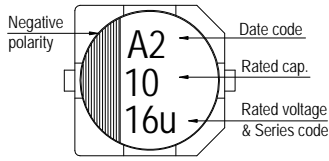
Lead Spacing and Diameter

Unit: mm

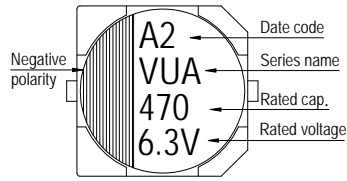
ϕD	L	A	B	C	W	P ± 0.2	Fig. No.
6.3	5.7 ± 0.3	6.6	6.6	7.2	0.5 ~ 0.8	2.0	1
6.3	7.7 ± 0.3	6.6	6.6	7.2	0.5 ~ 0.8	2.0	1
8	6.5 ± 0.3	8.4	8.4	9.0	0.5 ~ 0.8	2.3	1
8	10 ± 0.5	8.4	8.4	9.0	0.7 ~ 1.1	3.1	1
10	10 ± 0.5	10.4	10.4	11.0	0.7 ~ 1.3	4.7	1
12.5	13.5 ± 0.5	13.0	13.0	13.7	1.1 ~ 1.4	4.4	2
12.5	16 ± 0.5	13.0	13.0	13.7	1.1 ~ 1.4	4.4	2
16	16.5 ± 0.5	17.0	17.0	18.0	1.1 ~ 1.4	6.4	2
18	16.5 ± 0.5	19.0	19.0	20.0	1.1 ~ 1.4	6.4	2

Marking

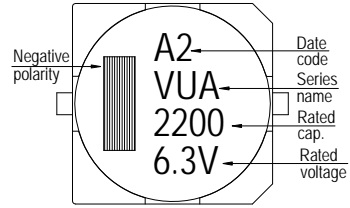
$\phi D = 6.3 \text{ mm}$



$\phi D = 8 \sim 10 \text{ mm}$



$\phi D \geq 12.5 \text{ mm}$



Dimension & Permissible Ripple Current

Dimension: $\phi D \times L(\text{mm})$

Ripple Current: mA/rms at 120 Hz, 125°C

μF	V. DC Contents	10V (1A)		16V (1C)		25V (1E)		35V (1V)		50V (1H)	
		$\phi D \times L$	mA	$\phi D \times L$	mA	$\phi D \times L$	mA	$\phi D \times L$	mA	$\phi D \times L$	mA
22	220							6.3×5.7	50	8×6.5	75
33	330			6.3×5.7	50	6.3×5.7	50	6.3×7.7	70	8×10	130
47	470			6.3×7.7	70	6.3×7.7	70	8×6.5	75	8×10	130
68	680	6.3×5.7	50	8×6.5	75	8×6.5	75	8×10	130	10×10	180
100	101	8×6.5	75	8×6.5	75	8×10	130	10×10	180	12.5×13.5	357
220	221	8×10	130	10×10	180	10×10	180	12.5×13.5	357	12.5×16	400
330	331	8×10	130	12.5×13.5	480	12.5×13.5	480	16×16.5	650	16×16.5	650
470	471	12.5×13.5	480	12.5×13.5	480	12.5×13.5	480	16×16.5	650	16×16.5	650
680	681	12.5×13.5	480	12.5×13.5	480	12.5×16	585	16×16.5	650	18×16.5	855
1,000	102	12.5×16	585	12.5×16	585	16×16.5	650	18×16.5	855		
1,500	152	12.5×16	585	16×16.5	650	18×16.5	855				
2,200	222	16×16.5	650	18×16.5	855						
3,300	332	18×16.5	855								
4,700	472	18×16.5	855								

NSCN | WWW.NSCN.COM.CN

总机: 025-52188228 客服: 400-888-5058

技术: 025-84712971 邮箱: TECH@NSCN.COM.CN

南京南山半导体有限公司